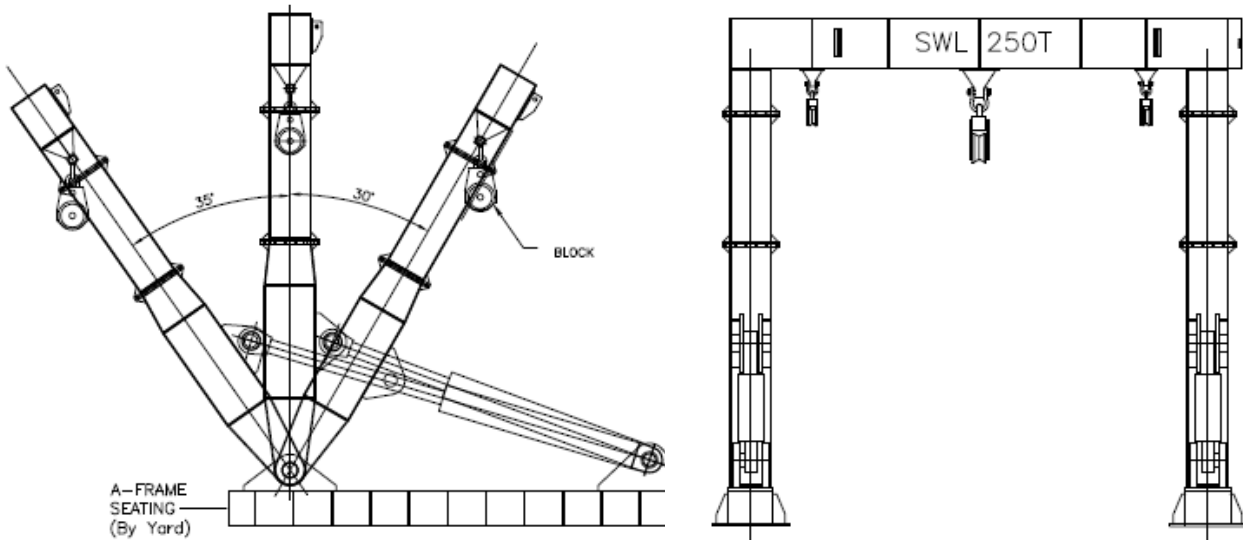




Robertson Offshore Private Limited
Admin. Office: 101A, Upper Cross Street, #11-16.
 Singapore 058358
Factory: No:6, Tuas West Street, Singapore 619177
 Tel: +65-65332244. Web: robertsonoffshore.com.sg

A-Frame



- a. Design for easy installation and removal onboard
- b. Suitable for launching and recovery object during subsea operations
- c. Active Heave Compensating (AHC) & Passive Heave Compensating features on hoisting winch
- d. Custom build to size and requirement
- e. Design approval & fabrication survey by third party Classification Society

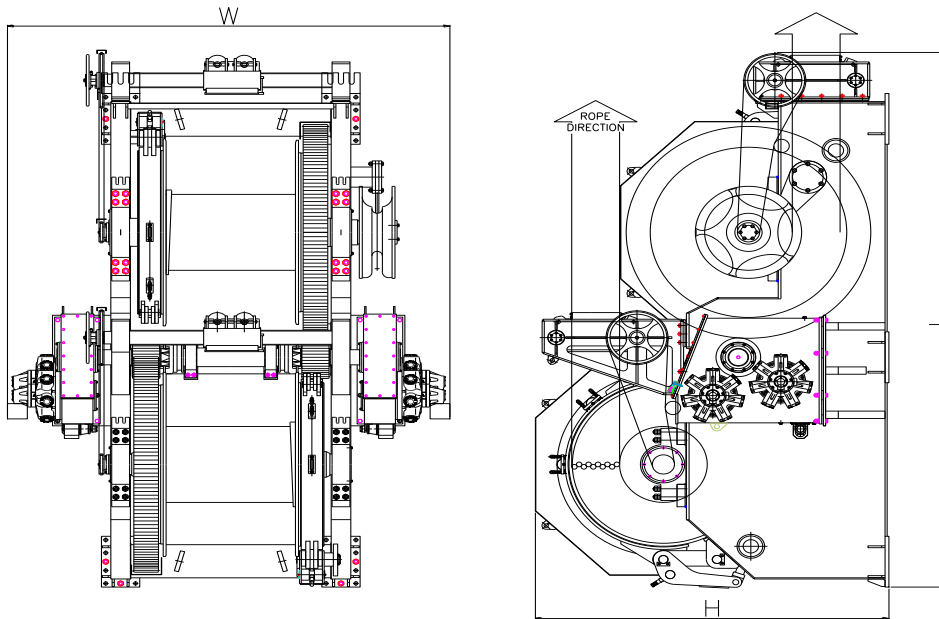
Model No.	SWL (T)	Max Outboard Distance (mm)	Max Inboard Distance (mm)	Span at Base (leg CC to CC) (mm)	Height to Top of the Beam (mm)	Est. Power (kw)
R-AF20	20T	4000mm	3650mm	7760mm	9000mm	60kw
R-AF50	50T	4250mm	3700mm	9000mm	10000mm	75kw
R-AF100	100T	5000mm	5000mm	10000mm	12000mm	150kw
R-AF200	200T	6000mm	6000mm	12000mm	13000mm	300kw
R-AF250	250T	6000mm	6000mm	12000mm	13000mm	400kw





Robertson Offshore Private Limited
 Admin. Office: 101A, Upper Cross Street, #11-16.
 Singapore 058358
 Factory: No:6, Tuas West Street, Singapore 619177
 Tel: +65-65332244. Web: robertsonoffshore.com.sg

Anchor Handling Towing Winch



Standard features include:

- Drive: Electric VFD or electro-hydraulic
- Configuration: Single, double or triple drum in side-by-side or waterfall arrangement
- Capacity: Up to 350Ton rated line-pull and 600Ton brake holding on first layer
- Brake: Hydraulic operated fail-safe type brake, with manual over-ride
- Feature: Dynamic braking to facilitate high speed lowering
- Other functions: Wire spooling; chain gypsy guide; grooved drums and emergency release function

Model No.	Drum Capacity	Drum Pull @ 1st layer	Brake Holding	Main Dimension (L x w x H)
HAHTW-WF-50B100	Dia. 38mm x 1000m SWR	50T x 0~6m/min 12T x 0~24m/min	100Ton	4.7m x 3.4m x 2.8m
HAHTW-WF-75B120	Dia. 42mm x 1000m SWR	75T x 0~8m/min 35T x 0~16m/min	120Ton	5.1m x 4.0m x 3.3m
HAHTW-WF-100B200	Dia. 56mm x 1000m SWR	100T x 0~6m/min 50T x 0~12m/min 25T x 0~24m/min	200Ton	5.2m x 4.0m x 3.3m
HAHTW-WF-150B200	Dia. 56mm x 1000m SWR	150T x 0~5m/min 100T x 0~7.5m/min 50T x 0~15m/min 20T x 0~30m/min	200Ton	5.7m x 4.1m x 3.5m
HAHTW-WF-200B300	Dia. 64mm x 1000m SWR	200T x 0~6m/min 110T x 0~16m/min 60T x 0~20m/min 20T x 0~42m/min	300Ton	6.5m x 5.4 m x 4.2m

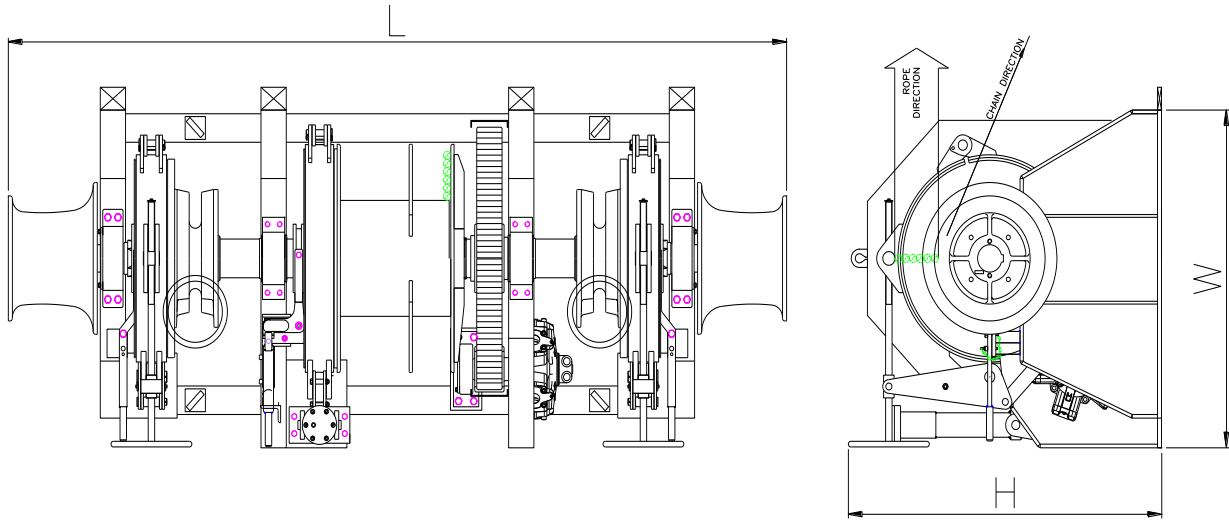
Note: Speed and drum capacity can be custom designed to suit customer requirement at time of order





Robertson Offshore Private Limited
Admin. Office: 101A, Upper Cross Street, #11-16.
 Singapore 058358
Factory: No:6, Tuas West Street, Singapore 619177
 Tel: +65-65332244. Web: robertsonoffshore.com.sg

Anchor Windlass Mooring Winch



Design Features

- Drive: Electric or electro-hydraulic motor
- Configuration: Single or double gypsy combined with single or double mooring drum
- Windlass size: Chain size not indicated below can be custom design to suit requirement at time of order
- Brake: Manual or hydraulic operated brake for mooring drum
- Clutch: Manual or hydraulic operated

Model No.	Windlass	Mooring Winch			Main Dimension (L x W x H)
	Gypsy Size	Drum Capacity	Drum Pull @ 1st layer	Brake Holding	
HWLMW32U2-GDG-05B10	32U2	Dia. 44mm x 150m PP Rope	5Ton x 15m/min	10Ton	3.6m x 1.7m x 1.7m
			2Ton x 30m/min		
HWLMW36U2-GDG-10B15	36U2	Dia. 52mm x 150m PP Rope	10Ton x 15m/min	15Ton	3.8m x 1.7m x 1.7m
			4.5Ton x 30m/min		
HWLMW42U2-GDG-15B25	42U2	Dia. 56mm x 150m PP Rope	15Ton x 15m/min	25Ton	4.5m x 2.0m x 2.1m
			8Ton x 30m/min		
HWLMW52U2-GDG-20B30	52U3	Dia. 110mm x 200m PP rope	20Ton x 10m/min	30Ton	4.5m x 2.0m x 2.1m
			8Ton x 20m/min		

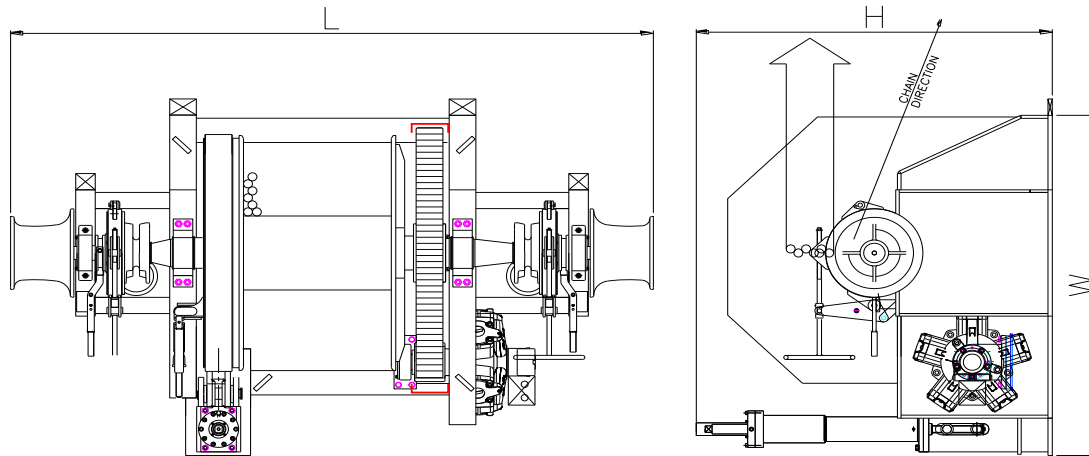
Note: Larger Chain size & mooring drum & line pull capacity will be offered upon request
 Electrical Motor Drive or VFD Drive can be supplied on request





Robertson Offshore Private Limited
Admin. Office: 101A, Upper Cross Street, #11-16.
 Singapore 058358
Factory: No:6, Tuas West Street, Singapore 619177
 Tel: +65-65332244. Web. robertsonoffshore.com.sg

Anchor Windlass Towing Winch



Design Features

- Drive: Electric or electro-hydraulic motor
- Windlass size: Chain size not indicated below can be custom design to suit requirement at time of order
- Configuration: Single or double gypsy combined with single, double or split drum
- Capacity: Up to 300Ton rated line-pull & 450Ton brake holding on first layer
- Brake: Manual or hydraulic control c/w fail safe brake
- Clutch: Manual, hydraulic, friction or pneumatic type
- Features: Design for various operational requirement including **ESCORT Notation** & Ex-proof operation

Model No.	Windlass	Towing Winch			Main Dimension (L x W x H)
	Gypsy Size	Drum Capacity	Drum Pull @ 1st layer	Brake Holding	
HWLW22U2-GDG-10B120	22U2	Dia. 80mm x 150m PP Rope	10Ton x 20m/min	120Ton	3.8m x 2.4m x 2.2m
			5Ton x 30m/min		
HWLW24U2-GDG-20B150	24U2	Dia. 86mm x 150m PP Rope	20Ton x 15m/min	150Ton	4.0m x 2.8m x 2.6m
			8Ton x 30m/min		
HWLW32U2-GDG-30B180	32U3	Dia. 96mm x 200m PP rope	30Ton x 15m/min	180Ton	4.2m x 3.0m x 2.8m
			12Ton x 30m/min		
HWLW38U2-GDG-50B200	38U3	Dia. 110mm x 200m PP rope	50Ton x 10m/min	200Ton	4.5m x 3.2m x 3.0m
			20Ton x 20m/min		

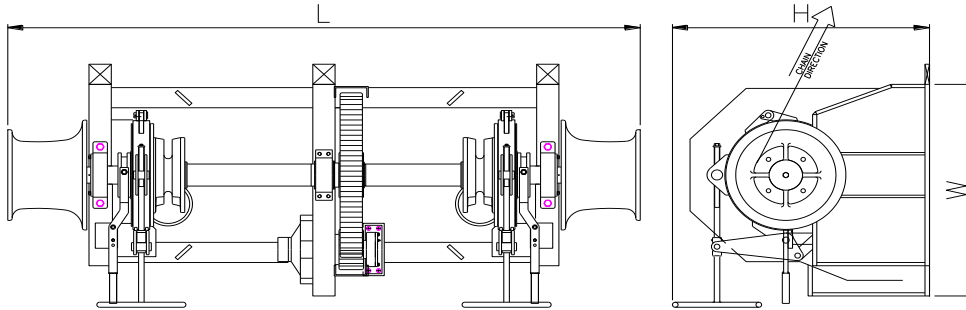
Note: Larger Chain size & Towing Drum & line pull capacity will be offered upon request
 Electrical Motor Drive or VFD Drive can be supplied on request





Robertson Offshore Private Limited
 Admin. Office: 101A, Upper Cross Street, #11-16.
 Singapore 058358
 Factory: No:6, Tuas West Street, Singapore 619177
 Tel: +65-65332244. Web: robertsonoffshore.com.sg

Anchor Windlass



Design Features

- Drive: Electric or electro-hydraulic motor
- Windlass size: Chain size not indicated below can be custom design to suit requirement at time of order
- Configuration: Single or double gypsy c/w warping head
- Brake: Manual

Model No.	Rated Pull, 1st Layer	Overload Pull	Brake Holding	Gypsy CTR TO CTR	Main Dimension L x W x H
HWL20.5U2-GG	1.9Ton x 9m/min	2.9Ton	11.3Ton	1200mm	2.6m x 1.1m x 1.2m
HWL22U2-GG	2.1Ton x 12m/min	3.2Ton	12.9Ton	1200mm	2.6m x 1.1m x 1.2m
HWL24U2-GG	3Ton x 10m/min	4.5Ton	22Ton	1200mm	2.6m x 1.1m x 1.2m
HWL-26U2GG	3Ton x 9m/min	4.5Ton	17.9Ton	1400mm	2.9m x 1.2m x 1.3m
HWL28U2-GG	5Ton x 12m/min	7.5Ton	20.6Ton	1400mm	2.9m x 1.2m x 1.3m
HWL30U2-GG	4.4Ton x 10m/min	5.7Ton	23.6Ton	1400mm	3.0m x 1.3m x 1.3m
HWL32U2-GG	4.5Ton x 9 m/min	6.8Ton	26.7Ton	1400mm	3.1m x 1.5m x 1.5m
HWL34U2-GG	5Ton x 12 m/min	7.5Ton	30Ton	1400mm	3.1m x 1.5m x 1.5m
HWL36U2-GG	5.7Ton x 9 m/min	8.6Ton	33.6Ton	1600mm	3.5m x 1.5m x 1.5m
HWL38U3-GG	6.3Ton x 9 m/min	9.5Ton	48Ton	1600mm	3.5m x 1.5m x 1.5m
HWL40U3-GG	8Ton x 12 m/min	12Ton	40.3Ton	2000mm	4.0m x 1.6m x 1.6m
HWL42U3-GG	7.7Ton x 9 m/min	11.6Ton	45Ton	2000mm	4.0m x 1.6m x 1.6m
HWL46U2-SG	9.2Ton x 9 m/min	13.8Ton	53.7Ton	N.A.	4.0m x 1.8m x 1.9m
HWL52U2-SG	11.8Ton x 9 m/min	17.7Ton	67.9Ton	N.A.	4.2m x 1.9m x 1.9m

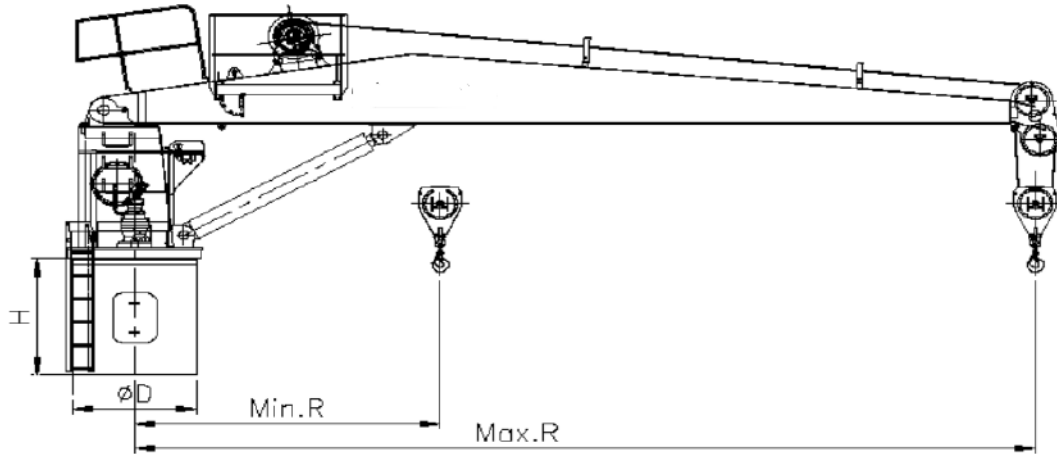
Note: Larger Chain size & mooring drum & line pull capacity will be offered upon request
 Electrical Motor Drive or VFD Drive can be supplied on request





Robertson Offshore Private Limited
Admin. Office: 101A, Upper Cross Street, #11-16.
 Singapore 058358
Factory: No:6, Tuas West Street, Singapore 619177
 Tel: +65-65332244. Web: robertsonoffshore.com.sg

Fixed Boom Crane



Design Features

- Suitable for general cargo, hose handling, offshore platform and support vessel lifting operations
- Open platform control console or air-conditioned cabin type control room
- Build in electro-hydraulic power pack
- Design to meet International Classification Societies approval and to API2C standard
- Crane can be custom build with Passive Heave or Active Heave Compensating (AHC)
- Optional features: Man Riding capabilities and Descon Scoop operation

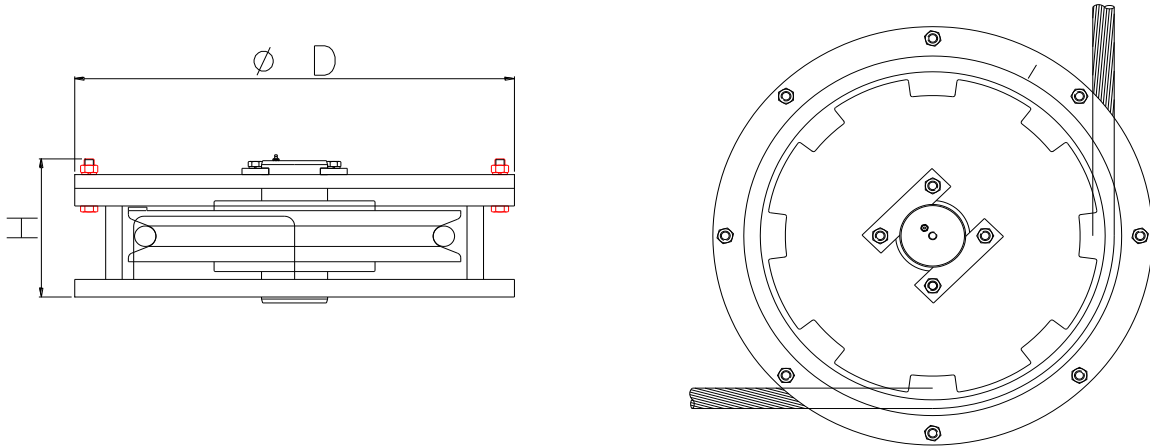
Model No	Lifting Capacity (T x m)	Min. Length R (m)	Max. Length R (m)	Pedestal Dia. OD (mm)	Pedestal Height H (mm)	Est. Power (kw)
FCRN40-2T8M	2T x 8m	2.7m	8m	920mm	1200mm	15kw
FCRN60-3T10M	3T x 10m	3.4m	10m	1020mm	1200mm	18.5kw
FCRN100-5T10M	5T x 10m	3.4m	10m	1270mm	1500mm	37kw
FCRN125-5T12M	5T x 12m	4.1m	12m	1420mm	1500mm	37kw
FCRN160-5Tx15M	5T x 15m	5.1m	15m	1620mm	1500mm	37kw
FCRN250-10Tx15M	10T x 15m	5.1m	15m	1820mm	1800mm	75kw
FCRN400-15Tx20M	15T x 20m	6.8m	20m	2020mm	1800mm	110kw
FCRN650-20Tx20M	20T x 20m	6.8m	20m	2260mm	1800mm	132kw
FCRN1300-25Tx25M	25T x 25m	8.5m	25m	2830mm	2000mm	160kw
FCRN1750-30Tx30M	30T x 30m	10.2m	30m	3170mm	2000mm	200kw
FCRN2600-40Tx35M	40T x 35m	12.0m	35m	4020mm	2200mm	250kw





Robertson Offshore Private Limited
Admin. Office: 101A, Upper Cross Street, #11-16.
Singapore 058358
Factory: No:6, Tuas West Street, Singapore 619177
Tel: +65-65332244. Web: robertsonoffshore.com.sg

Horizontal Leading Sheave



Design Features

- a. Designed for MBL of wire at 90degree wrap on sheave
- b. Sealed grease lubricated tapered roller bearings
- c. Surface hardened rope grooves for longer life

Optional Features

- a. Load and length monitoring system can be installed on sheave
- b. Special designed sheaves for high performance synthetic ropes
- c. Class Certification can be arranged upon request to meet Circle "P" or Posmoor requirements

Model No.	SWL @ 90 Degree Warp	Wire Rope Size	Main Dimension (D x H)
HLS-28	50Ton	28mm	630mm x 280mm
HLS-32	65Ton	32mm	730mm x 300mm
HLS-38	90Ton	38mm	860mm x 330mm
HLS-44	120Ton	44mm	990mm x 350mm
HLS-52	170Ton	52mm	1170mm x 320mm
HLS-63	250Ton	63mm	1430mm x 470mm

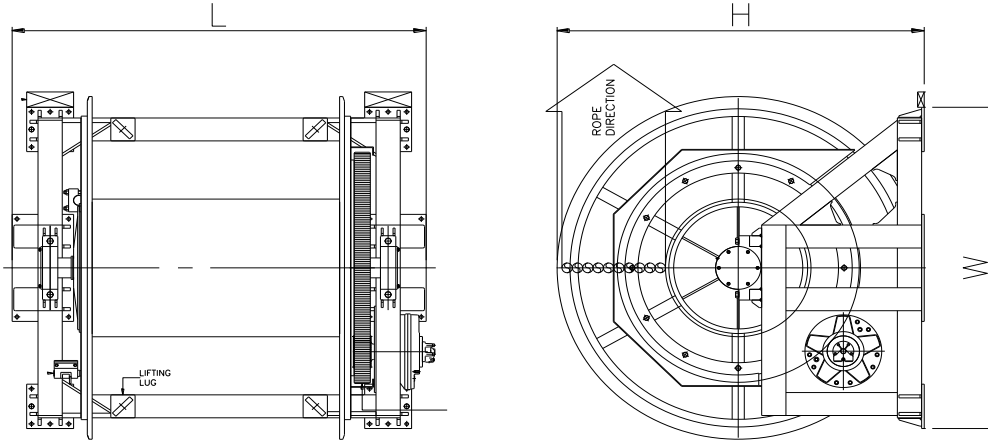
Note: Larger size for larger SWR will be offered upon request





Robertson Offshore Private Limited
Admin. Office: 101A, Upper Cross Street, #11-16.
 Singapore 058358
Factory: No:6, Tuas West Street, Singapore 619177
 Tel: +65-65332244. Web: robertsonoffshore.com.sg

Hydraulic Storage Reel



Design Features

- a. Drive: Electric or electro-hydraulic motor
- b. Capacity: Up to 50Ton line pull on first layer
- c. Brake: Manual or hydraulic type
- d. Clutch: Manual or hydraulic type

Additional Feature

- a. Band brake can be provided to replace the standard manual control parking stopper type brake.

Model No.	Rated Pull, 1st Layer	Drum Capacity	Main Dimension L x W x H
HSRW-SD-5T	5 Ton x 30m/min	52mm x 1500m or	2.5m x 2.1m x 2.2m
		56mm x 1200m or	
		58mm x 1200m	
HSRW-SD-10T	10 Ton x 20m/min	58mm x 1500m or	2.6m x 2.5m x 2.5m
		64mm x 1200m	
HSRW-SD-15T	15 Ton x 20m/min	68mm x 2500m or	2.9m x 3.2m x 3.2m
		76mm x 2000m	

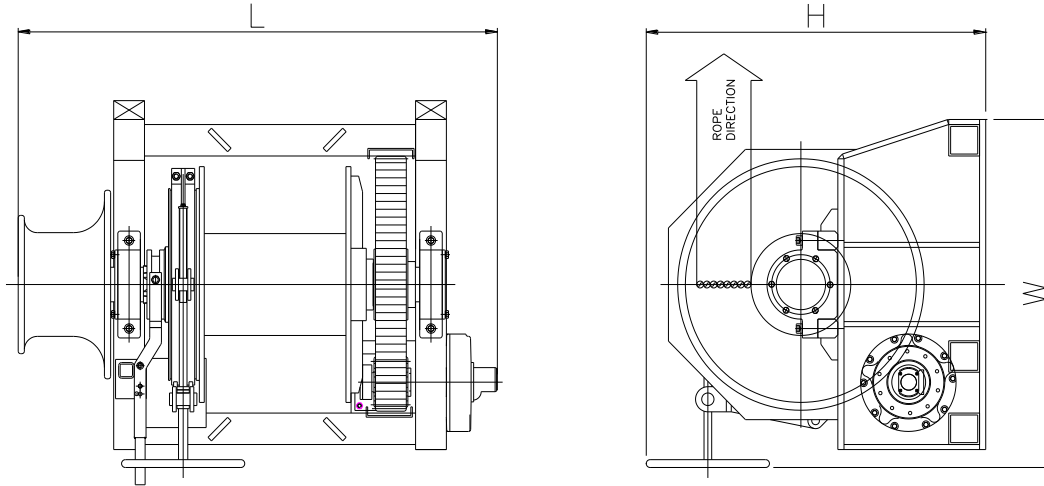
Note: Larger drum & line pull capacity can be offered upon request





Robertson Offshore Private Limited
Admin. Office: 101A, Upper Cross Street, #11-16.
 Singapore 058358
Factory: No:6, Tuas West Street, Singapore 619177
 Tel: +65-65332244. Web. robertsonoffshore.com.sg

Hydraulic Tugger Winch



Design Features

- Drive: Electric or electro-hydraulic motor
- Capacity: Up to 30Ton line pull and brake of up to 100Ton on first layer
- Brake: Manual or hydraulic type
- Clutch: Manual or hydraulic type

Model No.	Rated Pull, 1st Layer	Drum Capacity	Brake Holding	Main Dimension L x W x H
HTGW-SD-5B7.5	5 Ton x 15m/min	22mm x 250m	7.5 Ton	1.5m x 1.1m x 1.1m
HTGW-SD-10B15	10 Ton x 15m/min	24mm x 250m	15 Ton	1.9m x 1.4m x 1.4m
HTGW-SD-15B20	15 Ton x 15m/min	28mm x 250m	20 Ton	2m x 1.6m x 1.6m

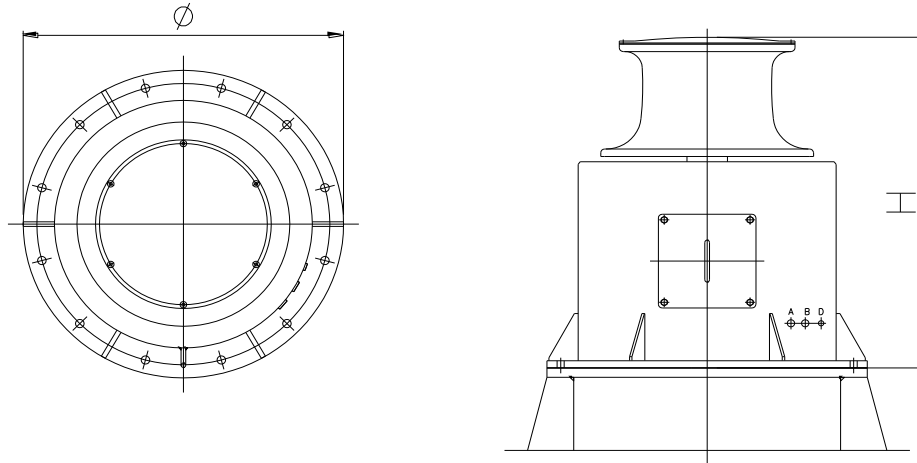
Note: Larger drum & line pull capacity will be offered upon request
 Electrical Motor Drive or VFD Drive can be supplied on request





Robertson Offshore Private Limited
Admin. Office: 101A, Upper Cross Street, #11-16.
 Singapore 058358
Factory: No:6, Tuas West Street, Singapore 619177
 Tel: +65-65332244. Web. robertsonoffshore.com.sg

Hydraulic Vertical Capstan



Design Features

- Drive: Electric or electro-hydraulic motor
- Capacity: Up to 40Ton SWL
- Feature: Local control stand, extended pendant or foot pedal operation can be provided

Model No.	Rated Pull, 1st Layer	Capstan Size	Main Dimension Ø x H
HVC-3T	3 Ton x 15m/min	Ø 330mm	820mm x 880mm
HVC-5T	5 Ton x 15m/min	Ø 400mm	900mm x 980mm
HVC-8T	8Ton x 15m/min	Ø 400mm	920mm x 970mm
HVC-10T	10 Ton x 15m/min	Ø 450mm	920mm x 1050mm

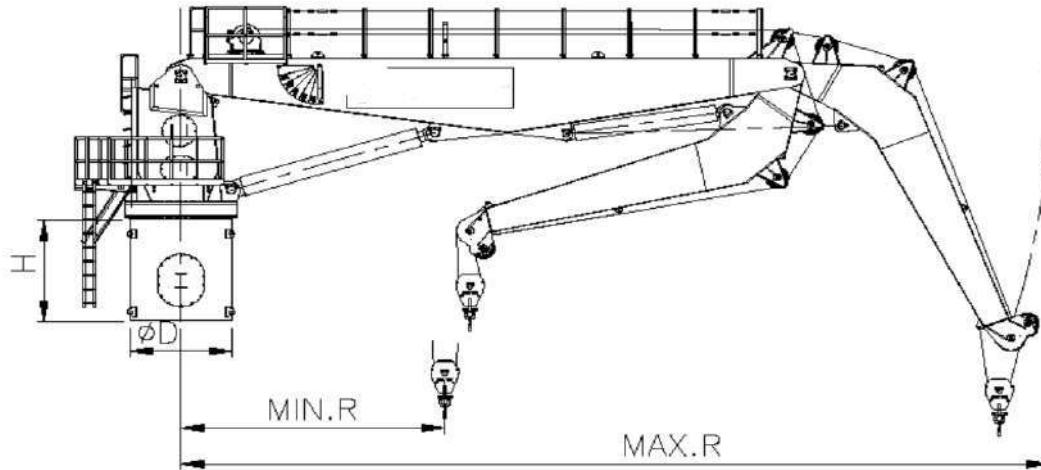
Note: Larger SWL capacity will be offered upon request
 Electrical Motor Drive or VFD Drive can be supplied on request





Robertson Offshore Private Limited
Admin. Office: 101A, Upper Cross Street, #11-16.
 Singapore 058358
Factory: No:6, Tuas West Street, Singapore 619177
 Tel: +65-65332244. Web: robertsonoffshore.com.sg

Knuckle Boom Crane



Design Features

- Design for general cargo, offshore lifting and deep sea operations
- Open platform control console or air-conditioned cabin type control room
- Active Heave Compensating (AHC) Or Passive Heave Compensating features
- Build in electro-hydraulic power pack
- Design for loads of up to 250T SWL with certification by International Classification Societies (IRAS) & to API2C.

Model No	Lifting Capacity (T x m)	Min. Length R (m)	Max. Length R (m)	Pedestal Dia. OD (mm)	Pedestal Height H (m)	Est. Power P (kw)
KCRN40-2T10M	2T x 10m	3.0m	10m	920mm	1200mm	15kw
KCRN60-3T10M	3T x 10m	3.0m	10m	1020mm	1200mm	18.5kw
KCRN100-5T10M	5T x 10m	3.0m	10m	1270mm	1500mm	37kw
KCRN160-5Tx15M	5T x 15m	4.2m	15m	1620mm	1500mm	37kw
KCRN250-10Tx12M	10T x 12m	3.5m	12m	1820mm	1800mm	75kw
KCRN400-15Tx12M	15T x 12m	3.5m	12m	2020mm	1800mm	110kw
KCRN650-20Tx15M	20T x 15m	4.2m	15m	2260mm	1800mm	132kw
KCRN1300-25Tx25M	25T x 25m	6.5m	25m	2830mm	2000mm	160kw
KCRN1750-30Tx25M	30T x 25m	6.5m	25m	3170mm	2000mm	200kw
KCRN2600-40Tx30M	40T x 30m	7.5m	30m	4020mm	2200mm	250kw

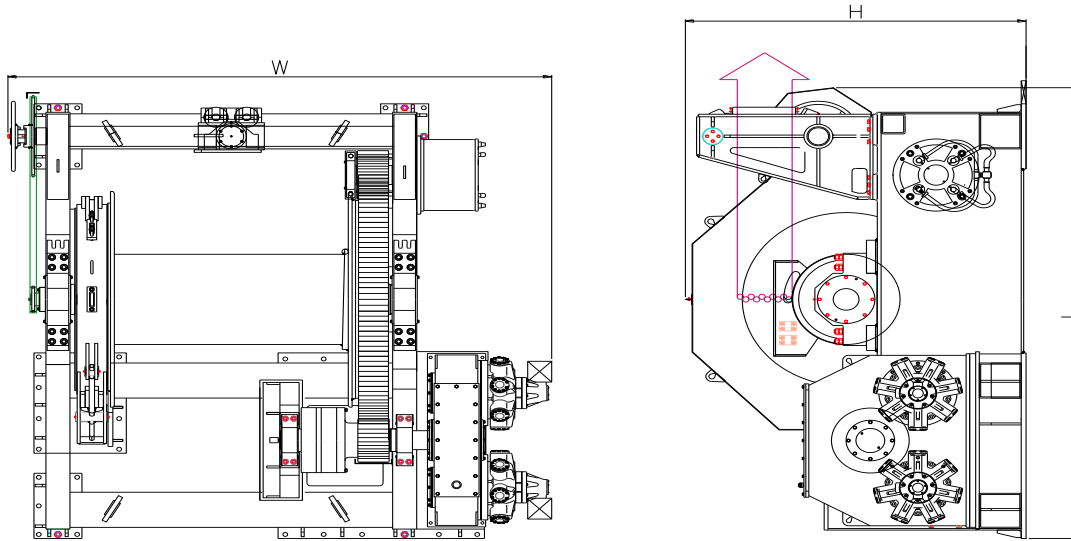
Note: Crane can be custom design and build to customer required specification





Robertson Offshore Private Limited
Admin. Office: 101A, Upper Cross Street, #11-16.
 Singapore 058358
Factory: No:6, Tuas West Street, Singapore 619177
 Tel: +65-65332244. Web. robertsonoffshore.com.sg

Mooring Winch



Design Features

1. Drive: Electric or VFD or electro-hydraulic motor
2. Configuration: Single or double drum in side-by-side or waterfall arrangement
3. Capacity: Up to 400Ton line pull and brake of up to 600Ton on first layer
4. Brake: Manual, hydraulic or pneumatic type
5. Clutch: Manual, hydraulic or friction type
6. Features: Dynamic disc type drag brake for free-wheeling pay out; load and length monitoring
7. Classification: Design & approved in accordance to Circle P or Posmoor can be arranged

Model No.	Drum Capacity	Drum Pull @ 1st layer	Brake Holding	Drag Brake	Main Dimension (W x L x H)
HMW-SD-40B90	Dia. 38mm x 1000m SWR	40Ton x 10m/min 10Ton x 30m/min	90Ton	5Ton x 120m/min	3.1m x 3.1m x 2.2m
HMW-SD-60B110	Dia. 42mm x 1000m SWR	60Ton x 10m/min 16Ton x 30m/min	110Ton	5Ton x 120m/min	3.4m x 3.4m x 2.2m
HMW-SD-85B150	Dia. 52mm x 1500m SWR	85Ton x 12m/min 50Ton x 19m/min 28Ton x 32m/min	150Ton	10Ton x 120m/min	4.4m x 4.6m x 2.6m
HMW-SD-125B200	Dia. 52mm x 1500m SWR	125Ton x 11m/min 75Ton x 16m/min 38Ton x 32m/min	200Ton	20Ton x 120m/min	4.7m x 4.9m x 2.8m

Note: Larger drum pull capacity will be offered upon request
 Electrical Motor Drive or VFD Drive can be supplied on request

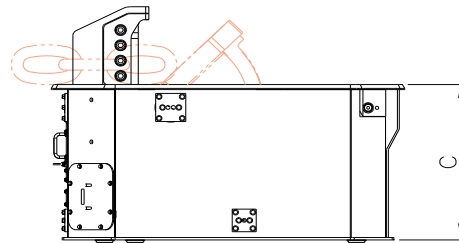
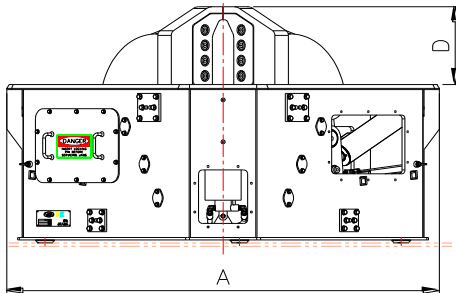
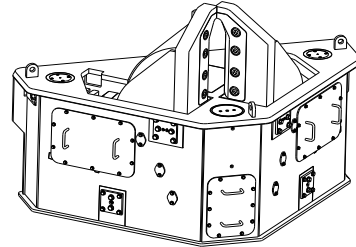
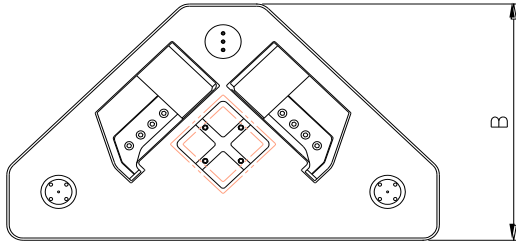




Robertson Offshore Private Limited
 Admin. Office: 101A, Upper Cross Street, #11-16.
 Singapore 058358
 Factory: No:6, Tuas West Street, Singapore 619177
 Tel: +65-65332244. Web: robertsonoffshore.com.sg



Shark Jaw



Standard Features

- Raised and lowered using heavy duty marine grade hydraulic cylinders
- Local control pendant and remote-control operations
- Flush with deck when not in operation
- When jaws are raised, there is no load on the hydraulic cylinders
- Emergency release function – approved by Independent Classification Societies

Optional Features

- Replaceable jaw inserts for different chain sizes
- Full Classification or Third-Party witness load test certification

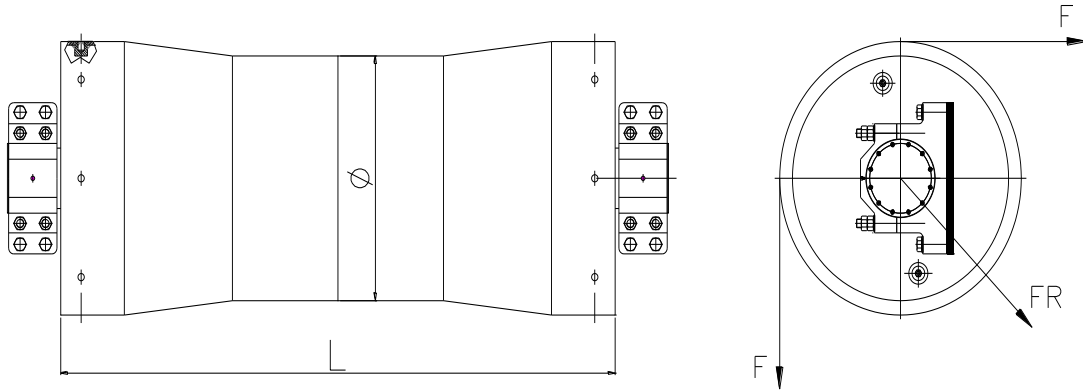
Model No.	Max Chain Size	Max wire Size	Main Dimension				Weight
			A	B	C	D	
200Ton	3.5"	3.5"	73"	40"	37"	16"	5400 LBS
350Ton	4.5"	4.75"	88"	50"	47"	19"	9000 LBS
500Ton	5.75"	6"	112"	60"	59"	24.5"	16000 LBS
750Ton	7.5"	7"	140"	75"	74"	30.5"	28500 LBS





Robertson Offshore Private Limited
Admin. Office: 101A, Upper Cross Street, #11-16.
Singapore 058358
Factory: No:6, Tuas West Street, Singapore 619177
Tel: +65-65332244. Web: robertsonoffshore.com.sg

Stern Roller



Design Feature

- Bearing can be of bronze bushing, roller bearing or synthetic type bearing
- Cooling can be of greasing or automatic water-cooled type
- Stern roller can be of single drum or twin drum type

Model No.	Resultant Force F	Main Dimension $\phi \times L$
SR-1600-4000	200 Ton	1600mm x 4000mm
SR-1700-4500	250 Ton	1700mm x 4500mm
SR-2000-5000	350 Ton	2000mm x 5000mm

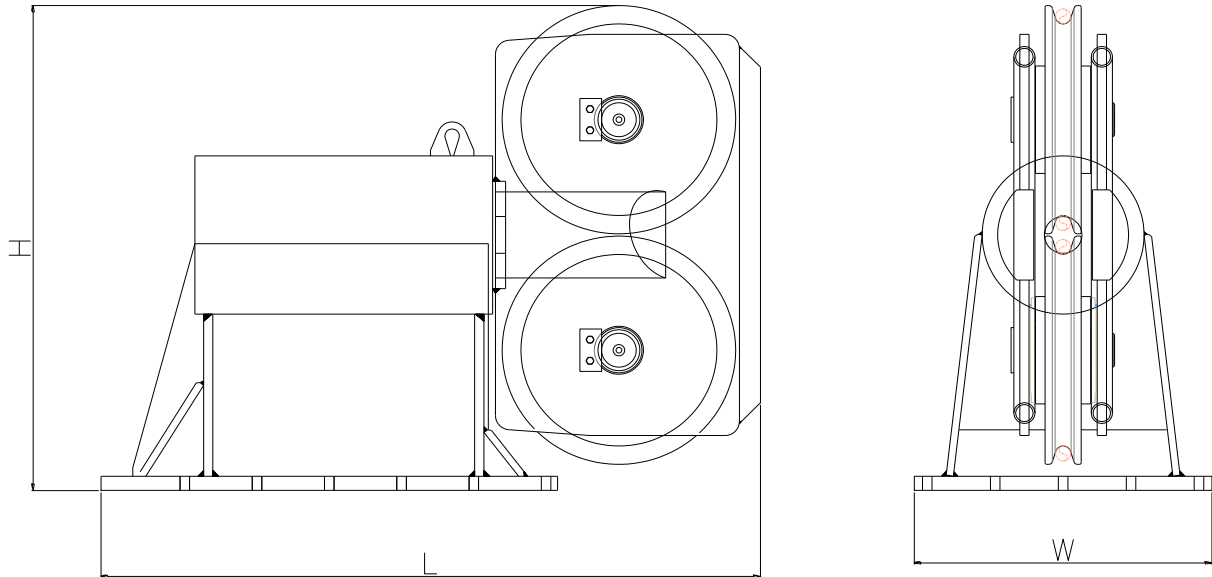
Note: The size of stern roller can be designed suit to customer requirement.





Robertson Offshore Private Limited
Admin. Office: 101A, Upper Cross Street, #11-16.
Singapore 058358
Factory: No:6, Tuas West Street, Singapore 619177
Tel: +65-65332244. Web. robertsonoffshore.com.sg

Swivel Fairlead



Design Features

- Designed for MBL of wire with 90degree wrap on sheave and +/- 90degree rotation of swivel head
- Hardened rope grooves for longer operating life
- Special design sheaves for high performance synthetic ropes
- Class Certification can be arranged for Circle "P" or Posmoor

Model No	SWL @ 90 Degree Warp	Wire Rope Size	Main Dimension (L x W x H)
SFL-32	65Ton	32mm	760mm x 470mm x 640mm
SFL-38	90Ton	38mm	1210mm x 950mm x 970mm
SEL-44	120Ton	44mm	1160mm x 730mm x 1160mm
SFL-52	170Ton	52mm	2180mm x 1060mm x 1510mm
SFL-63	250Ton	63mm	2630mm x 1500mm x 1870mm

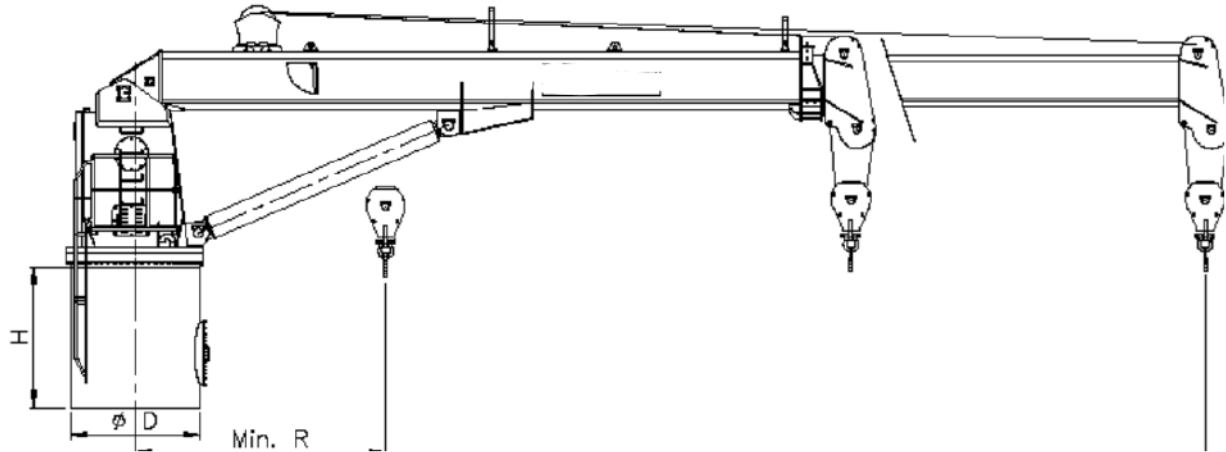
Note: Larger SWR capacity will be offered upon request





Robertson Offshore Private Limited
Admin. Office: 101A, Upper Cross Street, #11-16.
 Singapore 058358
Factory: No:6, Tuas West Street, Singapore 619177
 Tel: +65-65332244. Web: robertsonoffshore.com.sg

Telescopic Boom Crane



Design Features

- Design for general cargo, offshore lifting and deep sea operations
- Open platform control console or air-conditioned cabin type control room
- Active Heave Compensating (AHC) Or Passive Heave Compensating features
- Build in electro-hydraulic power pack
- Design to meet International Classification Societies approval and to API2C
- Optional features: Man Riding capabilities and Descon Scoop operation

Model No	Lifting Capacity (T x m)	Min. Length R (m)	Boom Extended R (m)	Pedestal Dia. OD (mm)	Pedestal Height H (mm)	Est. Power (kw)
TCRN60-2T12M	2T x 12m	2.7m	12m	920mm	1200mm	15kw
TCRN100-3T15M	3T x 15m	3.4m	15m	1020mm	1500mm	18.5kw
TCRN125-5T12M	5T x 12m	2.7m	12m	1420mm	1500mm	37kw
TCRN160-5Tx15M	5T x 15m	3.4m	15m	1620mm	1500mm	37kw
TCRN250-5Tx20M	5T x 20m	4.1m	20m	1820mm	1800mm	37kw
TCRN400-10Tx20M	10T x 20m	4.1m	20m	2020mm	1800mm	75kw
TCRN650-10Tx25M	10T x 25m	6.1m	25m	2260mm	1800mm	75kw
TCRN1300-15Tx30M	15T x 30m	6.1m	30m	2830mm	2000mm	110kw
TCRN1750-20Tx30M	20T x 30m	6.1m	30m	3170mm	2000mm	132kw

Note: Crane can be custom design and build to customer required specification

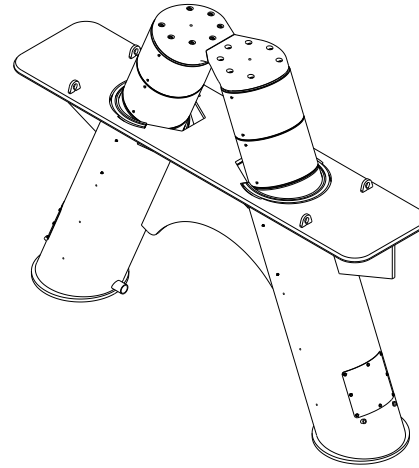
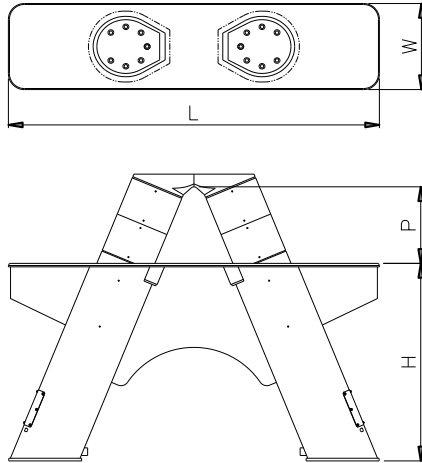




Robertson Offshore Private Limited
Admin. Office: 101A, Upper Cross Street, #11-16.
 Singapore 058358
Factory: No:6, Tuas West Street, Singapore 619177
 Tel: +65-65332244. Web. robertsonoffshore.com.sg



Towing Pin



Standard Features

- Raised and lowered using heavy duty marine grade hydraulic cylinders
- Angular close tip or parallel inline type pins configuration
- Local control pendant and remote-control operations
- Flush with deck when not in operation
- Emergency release system approved by Independent Classification Societies

Optional Features

- Full Classification or Third-Party witness load test certification
- Can be custom design and build to customer required specification

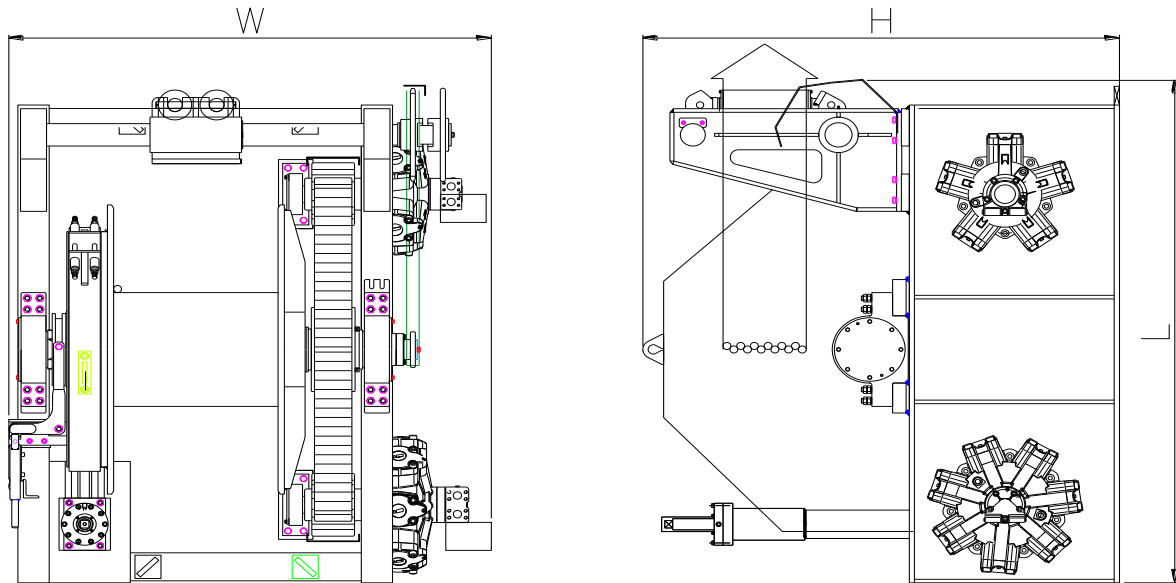
Model No.	SWL	Pin Capture Working Height (P)	Main Dimension		
			L	W	H
SB-TPA-100T	100Ton	415mm	2.2m	0.5m	1.2m
SB-TPA-200T	200Ton	610mm	2.7m	0.62m	1.5m
SB-TPA-350T	350Ton	724mm	3.5m	0.82m	1.9m
SB-TPA-500T	500Ton	724mm	140	3.63m	1.9m





Robertson Offshore Private Limited
Admin. Office: 101A, Upper Cross Street, #11-16.
 Singapore 058358
Factory: No:6, Tuas West Street, Singapore 619177
 Tel: +65-65332244. Web. robertsonoffshore.com.sg

Towing Winch



Design Features

- Drive: Electric VFD or electro-hydraulic motor
- Configuration: Single, double or split drum
- Capacity: Up to 250Ton rated line-pull and 500Ton brake holding on first layer
- Brake: Hydraulic control fail safe brake
- Clutch: Manual, hydraulic, friction or pneumatic type
- Features: Design for Escort Notation and Ex-proof operation

Model No.	Towing Winch			Main Dimension (L x W x H)
	Drum Capacity	Drum Pull @ 1st layer	Brake Holding	
HTW-SD-10B120	Dia. 42mm x 600m SWR	10Ton x 20m/min	120Ton	2.6m x 2.5m x 2.2m
		5Ton x 30m/min		
HTW-SD-20B150	Dia. 52mm x 800m SWR	20Ton x 15m/min	150Ton	
		8Ton x 30m/min		
HTW-SD-30B180	Dia. 58mm x 800m SWR	30Ton x 15m/min	180Ton	
		12Ton x 30m/min		
HTW-SD-50B200	Dia. 64mm x 1000m SWR	50Ton x 10m/min	200Ton	
		20Ton x 20m/min		
HTW-SD-75B200	Dia. 64mm x 1000m SWR	75Ton x 10m/min	200Ton	
		30Ton x 20m/min		

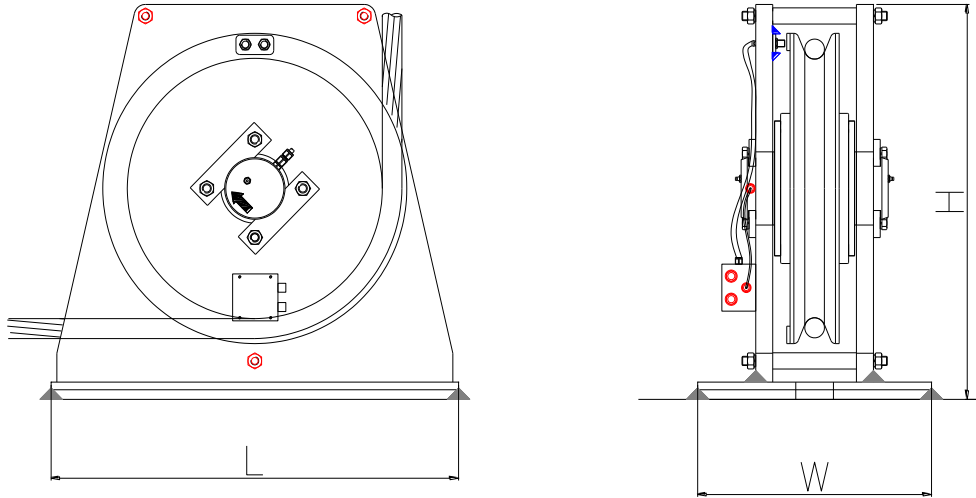
Note: Capacity not indicated below table shall be provided on request.





Robertson Offshore Private Limited
Admin. Office: 101A, Upper Cross Street, #11-16.
 Singapore 058358
Factory: No:6, Tuas West Street, Singapore 619177
 Tel: +65-65332244. Web: robertsonoffshore.com.sg

Vertical Leading Sheave



Design Features

- Designed for MBL of wire with up to 90 degrees wrap on sheave
- Sealed grease lubricated tapered roller bearings
- Hardened rope grooves for longer operating life

Optional Features

- Load and length monitoring system
- Special sheaves for high performance synthetic ropes
- Class Certification can be arranged upon request to meet Circle "P" or Posmoor requirements

Model No.	SWL @ 90 Degree Warp	Wire Rope Size	Main Dimension (W x L x H)
VLS-28	50Ton	28mm	620mm x 350mm x 650mm
VLS-32	65Ton	32mm	700mm x 400mm x 730mm
VLS-38	90Ton	38mm	810mm x 460mm x 840mm
VLS-44	120Ton	44mm	930mm x 520mm x 970mm
VLS-52	170Ton	52mm	1080mm x 620mm x 1130mm
VLS-63	250Ton	63mm	1300mm x 730mm x 1350mm

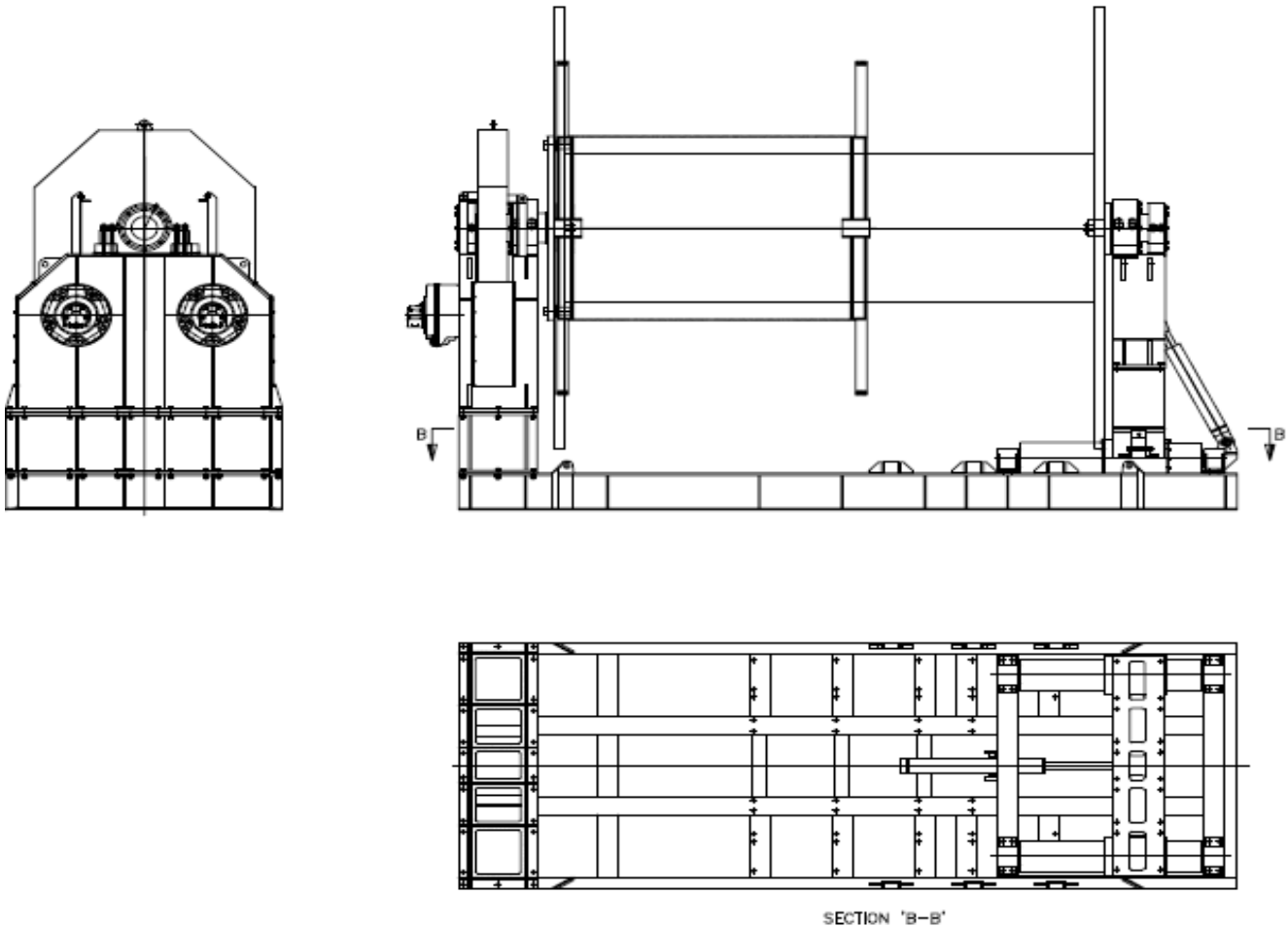
Note: Larger capacity will be offered upon request





Robertson Offshore Private Limited
Admin. Office: 101A, Upper Cross Street, #11-16.
Singapore 058358
Factory: No:6, Tuas West Street, Singapore 619177
Tel: +65-65332244. Web: robertsonoffshore.com.sg

Wire Rope Spooler



Design features

- The wire rope spooler is design to suit a specific reel capacity, ranging from 10Ton to 600Ton, and is suitable for onshore and offshore usage
- The wire rope spooler unit shall be a standalone unit, driven by a separate containerised electro-hydraulic power pack or diesel driven engine
- The containerised electro-hydraulic power pack or diesel driven engine are design and build for offshore lifting
- A local control panel is built into the container. An optional remote-control station with up to 25m of cable can also be offer upon request.

Note

- Technical specification and General Arrangement drawings shall be provided on request
- Custom designs are available to meet customer specific operational requirement

